

Nikon Digital Camera COOLPIX 3200/COOLPIX 2200 Specifications

Type:	Digital camera E3200/E2200
Effective pixels:	3.2 million (E3200)/2.0 million (E2200)
CCD:	E3200: 1/2.7-in. type (3.34 million total pixels) E2200: 1/3.2-in. type (2.14 million total pixels)
Image modes:	E3200: High (2,048*), Normal (2,048), Normal (1,600), PC Screen (1,024), TV Screen (640) E2200: High (1,600*), Normal (1,600), PC Screen (1,024), TV Screen (640)
Lens:	E3200: 3x Zoom-Nikkor; f=5.8-17.4mm (35mm format equivalent to 38-115mm); Digital zoom: up to 4x E2200: 3x Zoom-Nikkor; f=4.7-14.1mm (35mm format equivalent to 36-108mm); Digital zoom: up to 4x
LCD monitor:	1.6-in.; 80,000-dot low-temp. polysilicon TFT LCD with 5-level brightness adjustment
Storage media:	Internal memory: approx. 14.5MB, SD memory card
AF-assist illuminator:	Automatically fires in dim-light conditions (E3200 only)
Shooting modes:	Auto, Scene Assistance (Portrait, Landscape, Sports, Night portrait), Scene (Party/Indoor, Beach/Snow, Sunset, Dusk/Dawn, Night landscape, Close up, Museum, Fireworks show, Copy, Back light, Panorama assist), Blur Warning, Date imprint, Date counter, Self-timer (10 sec.), BSS (Best Shot Selector)
Capture modes:	Single, Continuous, Multi-shot 16 (16 frames 1/16 in size) Color Options (Standard color, Vivid color, Black-and-white, Sepia, Cyanotype)
Movie:	TV movie (640) at 15fps, Small size (320) at 15fps, Smaller size (160) at 15fps E3200: With sound E2200: Without sound
Movie length:	(Internal memory): TV movie (640): approx. 26 sec., Small size (320): approx. 52 sec., Smaller size (160): approx. 211 sec.
Number of frames:	E3200: (w/ Internal memory): High (2,048*): approx. 9, Normal (2,048): approx. 18 E2200: (w/ Internal memory): High (1,600*): approx. 15, Normal (1,600): approx. 29
Built-in Speedlight:	Shooting range: E3200: approx. 0.4-3.4m/1.3-11.2 ft. (W), approx. 0.4-2.0m/1.3-6.6 ft. (T) E2200: 0.4-3.7m/1.3-12.1 ft. (W) 0.4-2.0m/1.3-6.6 ft. (T) Flash modes: Auto, Red-eye Reduction, Anytime Flash, Flash Cancel (off), Slow sync.
Interface:	USB
Battery life:	E3200: Approx. 320 frames with two EN-MH1 batteries, approx. 140 frames with two alkaline batteries when using LCD monitor E2200: Approx. 350 frames with two EN-MH1 batteries, approx. 150 frames with two alkaline batteries when using LCD monitor
Power requirements:	Two rechargeable Nikon EN-MH1 NiMH batteries, One CRV3 lithium battery, Two LR6 (AA) alkaline batteries, Two ZR6 (AA) nickel manganese batteries, Two FR6/LR1 (AA) lithium batteries, EH-62B AC adapter
Dimensions (WxHxD):	Approx. 88 x 65 x 36mm (3.5 x 2.6 x 1.5 in.)
Weight:	Approx. 140g (4.9 oz.) (Without battery and memory card)
Supplied accessories:	Strap, USB cable, Audio Video cable (E3200), Video cable (E2200), Rechargeable battery (EN-MH1)*, Battery charger*, Nikon View CD-ROM, Quick start Guide, and Instruction manual
Optional accessories:	* Two LR6 (AA) alkaline batteries supplied instead in some countries and areas. Ni-MH Rechargeable battery EN-MH1-B2, Battery charger, AC adapter EH-62B, Soft case, SD memory card, and Waterproof case WP-CP1* * Not available in some countries and areas.

Nikon View System Requirements

Macintosh	OS: Mac OS 9.0-9.2, Mac OS X (10.1.3 or later) Models: iMac™, iMac™ DV, Power Macintosh™ G3 (Blue & White), Power Mac™ G4 or later; iBook™, PowerBook™ G3 or later (only built-in USB ports are supported) RAM: 64MB or more recommended Hard disk: 60MB required for installation, with additional amount equivalent to twice the capacity of the camera memory card plus 10MB required when Nikon View is running Display: 800 x 600 with 16-bit color (full color recommended) Others: CD-ROM drive required for installation
Windows	OS: Windows® 98SE, Windows® Me, Windows® 2000 Professional, Windows® XP Home Edition, Windows® XP Professional pre-installed model Models: Only models with built-in USB ports supported CPU: Pentium™ 300MHz or higher RAM: 64MB or more recommended Hard disk: 60MB required for installation, with additional amount equivalent to twice the capacity of the camera memory card plus 10MB required when Nikon View is running Display: 800 x 600 with 16-bit color (full color recommended) Others: CD-ROM drive required for installation

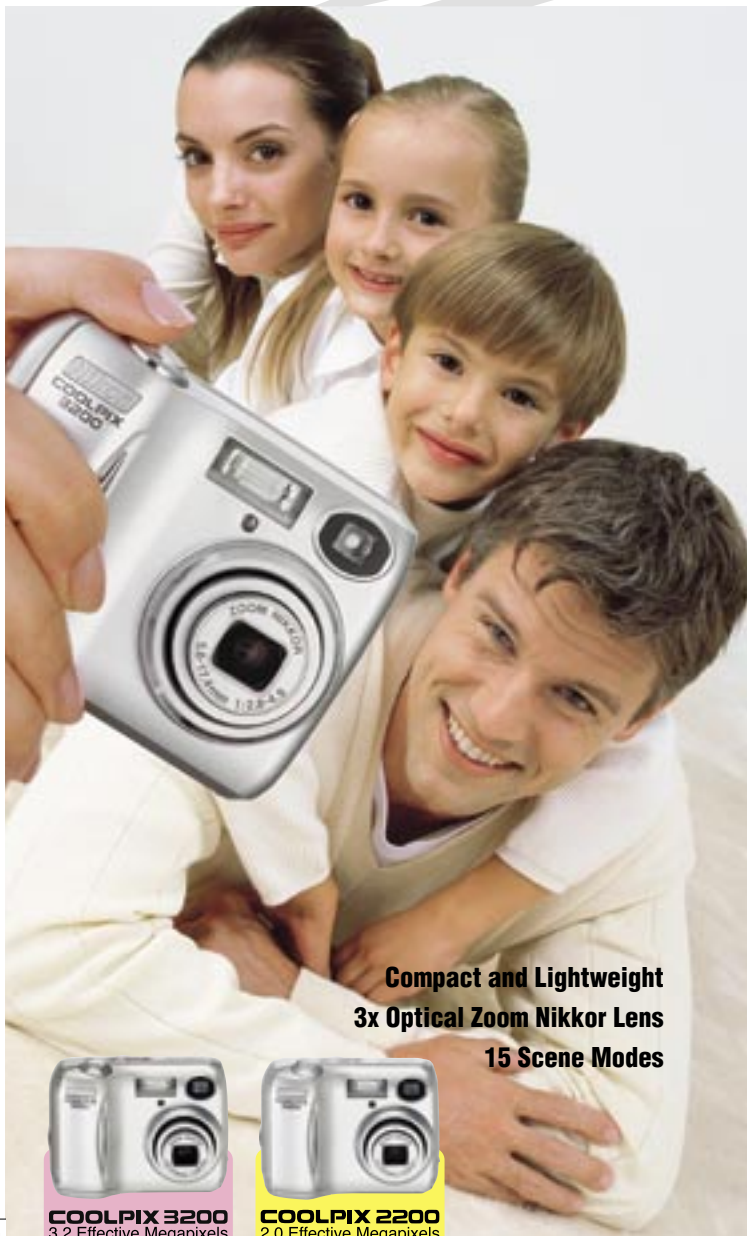
Microsoft® and Windows® are either registered trademarks or trademarks of Microsoft Corporation in the United States and/or other countries. Macintosh™ and QuickTime™ are either registered trademarks or trademarks of Apple Computer Inc. in the United States and/or other countries. The SD logo is a trademark. PicBridge is a trademark. Products and brand names are trademarks or registered trademarks of their respective companies. Images shown on LCDs and monitors in this brochure are simulated.

Specifications and equipment are subject to change without any notice or obligation on the part of the manufacturer. January 2004 ©2004 NIKON CORPORATION



At the heart of the image

DIGITAL CAMERA
COOLPIX
3200
2200



Compact and Lightweight
3x Optical Zoom Nikkor Lens
15 Scene Modes



COOLPIX 3200
3.2 Effective Megapixels



COOLPIX 2200
2.0 Effective Megapixels

En



WARNING TO ENSURE CORRECT USAGE, READ MANUALS CAREFULLY BEFORE USING YOUR EQUIPMENT. SOME DOCUMENTATION IS SUPPLIED ON CD-ROM ONLY.



NIKON CORPORATION

Fuji Bldg., 2-3 Marunouchi 3-Chome, Chiyoda-Ku,
Tokyo 100-8331, Japan
<http://nikonimaging.com/>

The simpler approach to capturing family fun.

Simple to operate.

Comfortable, easy to hold grip design.

Nikon optics for crisp, detailed photos.

Advanced technologies for further enjoyment.

The new 3 megapixel COOLPIX 3200 and 2 megapixel COOLPIX 2200: compact and lightweight digital cameras for go-anywhere use.

Get your hands on the latest digital technology.



COOLPIX 3200
3.2 Effective Megapixels



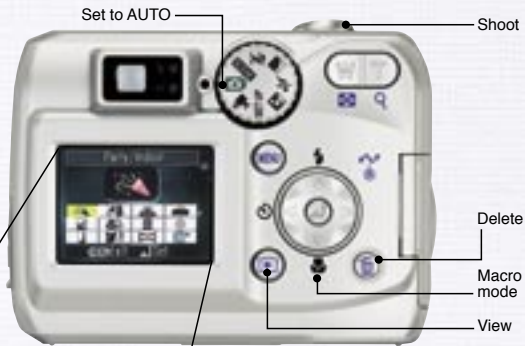
COOLPIX 2200
2.0 Effective Megapixels





Digital simplicity

A large LCD and user-friendly screen make it easy to set up the camera, preview shots, and view recorded images.



Party / Indoor



Portrait Assist

The handy Portrait Assist mode turns anyone into a great photographer.



The four most commonly used Scene modes feature Scene Assist and can be accessed with just a turn of a dial.

Portrait Landscape Sports Night portrait

Other Scene Modes...

Party / Indoor Dusk / Dawn Museum Back light
 Beach / Snow Night landscape Fireworks show Panorama assist
 Sunset Close up Copy

Quality you can count on

Take pride in owning a Nikon COOLPIX. Precision optics, digital expertise, and exceptional quality combine to make taking great pictures easy for you, and your family too.



Telephoto



Wide

The high-quality 3x optical Zoom-Nikkor lens combined with Nikon digital technology delivers outstanding, clear photographs.

Step up to advanced photography

Fill the frame with the smallest of subjects, bringing out the detail in everyday items — the Macro mode lets you get stunning close-ups from just 4cm away.



Macro mode

The onboard AF assist light* helps to ensure sharp focus when shooting in dark situations. (*E3200 only)

Let Blur Warning alert you if a picture needs another attempt.



Black-and-white

Standard color



Sepia



A range of fun features

Experience the full potential of digital photography.

PictBridge allows you to send images directly to a printer*, without the need for a PC. (*When the E3200 and E2200 are used with PictBridge compatible printers.)



A large internal memory is like having a re-usable roll of film always ready in the camera. It's also easy to transfer images from the camera's internal memory to the SD memory card, or vice versa.



Movie mode gives you the power to capture live action with sound*, while TV connectivity lets you show friends and family your movie clips on a grander scale. (*E3200 only.)



5 Color Options allow you to select from standard color, vivid color, black-and-white, sepia, or cyanotype shooting for more creative results.



Cyanotype



Vivid color

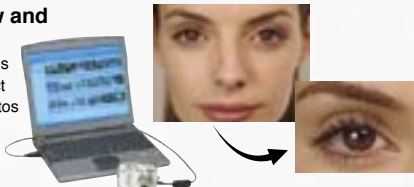
Date counter makes special events more memorable by counting the days to, or time since, the big occasion.

Wide-ranging battery capability gives you a choice of commonly available rechargeable and disposable (alkaline) batteries to ensure that you never miss a special moment.

Nikon's Best Shot Selector (BSS) shoots a series and then picks out the clearest picture.

Included Nikon View and Fotoshare software

make it easy to attach images to email, resize shots, correct red eye, and share your photos with your family and friends.



Optional waterproof case*

Take photos in the rain, on the beach, or even underwater while scuba diving to 40m depths with the optional waterproof case.

(*Design subject to change without notice.)

